

deck collection

last 12 months all history

Today

Studied 245 cards in 33.62 minutes today (8.23s/card)

Again count: 104 (42.45%)

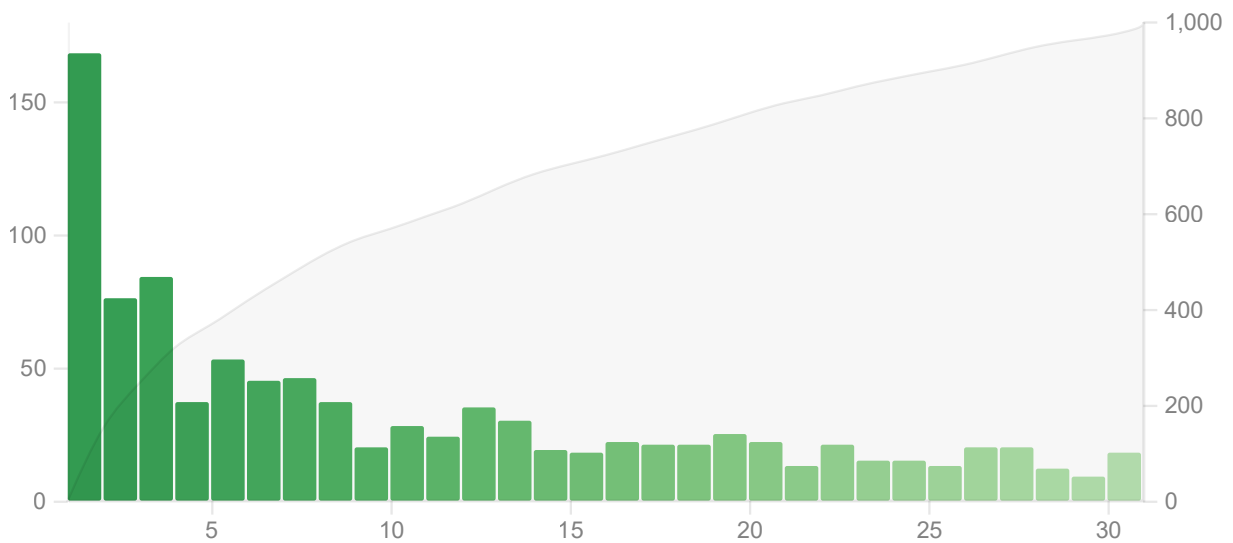
Learn: 69, Review: 115, Relearn: 61, Filtered: 0

Correct answers on mature cards: 7/16 (43.75%)

Future Due

The number of reviews due in the future.

1 month 3 months 1 year all



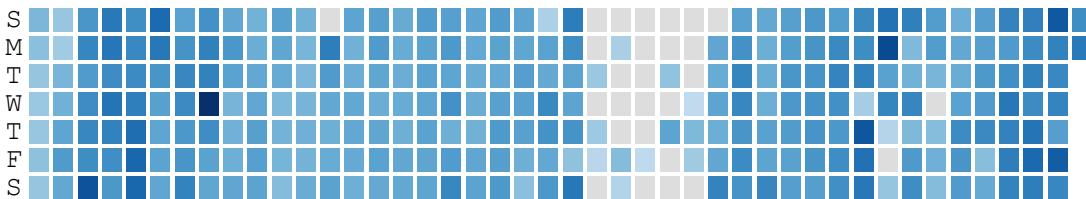
Total: 998 reviews

Average: 33 reviews/day

Due tomorrow: 168 reviews

Calendar

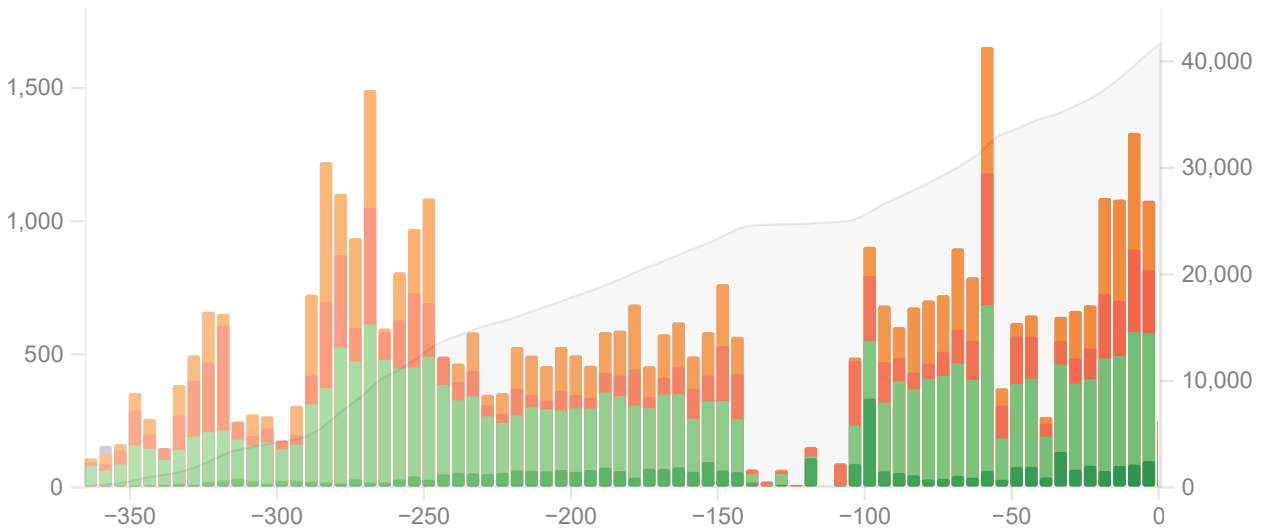
◀ 2023 ▶



Reviews

The number of questions you have answered.

Time 1 month 3 months 1 year



Days studied: 337 of 365 (92%)

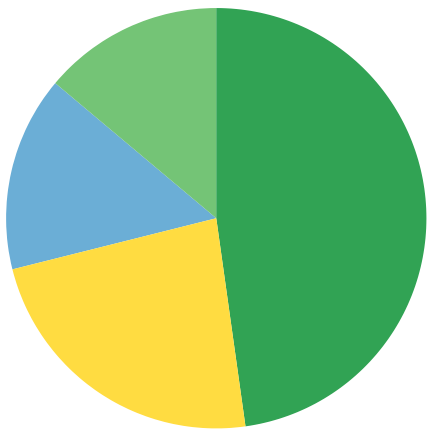
Total: 41,580 reviews

Average for days studied: 123 reviews/day

Average over period: 114 reviews/day

Card Counts

Separate suspended/buried cards

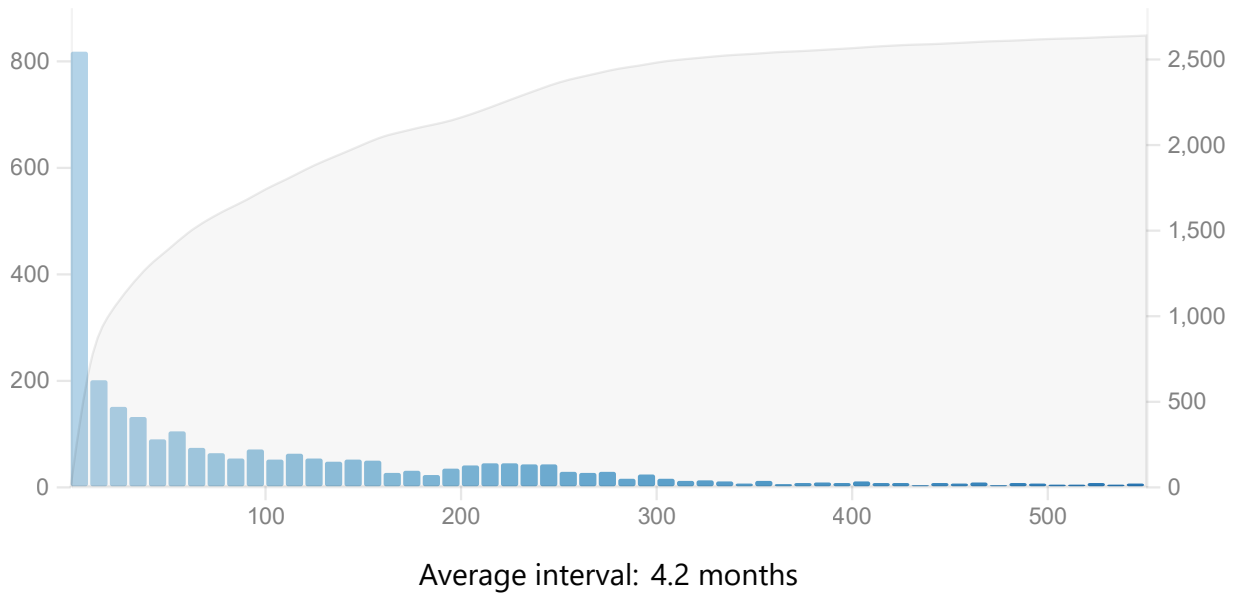


New	504	15.02%
Learning	0	0%
Relearning	0	0%
Young	466	13.89%
Mature	1,603	47.78%
Suspended	782	23.31%
Buried	0	0%
Total	3,355	

Review Intervals

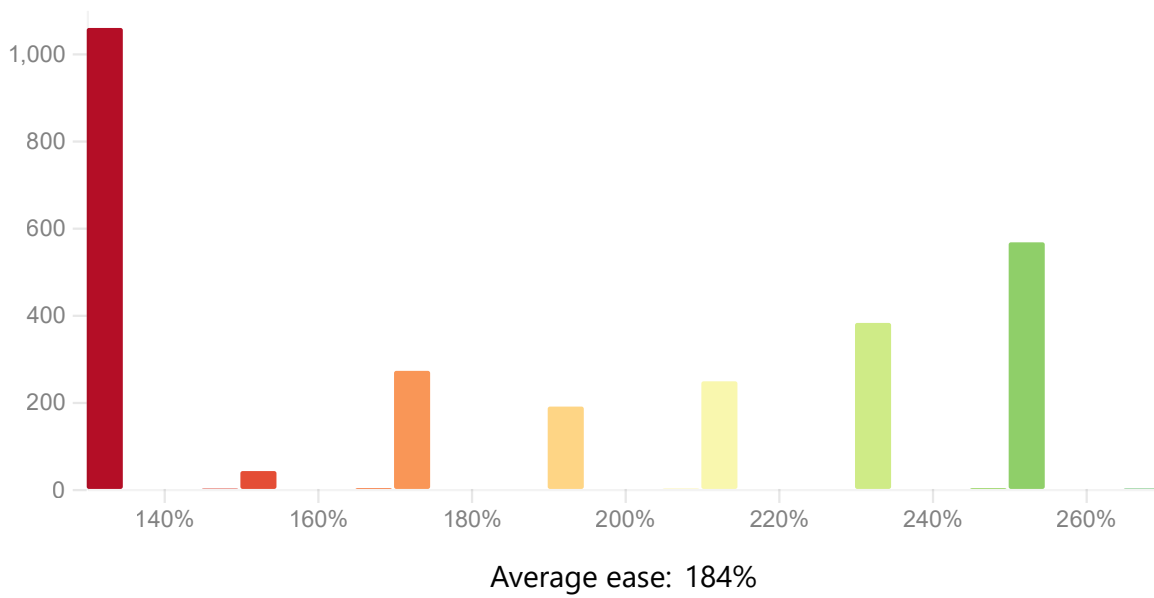
Delays until reviews are shown again.

1 month 50% 95% all



Card Ease

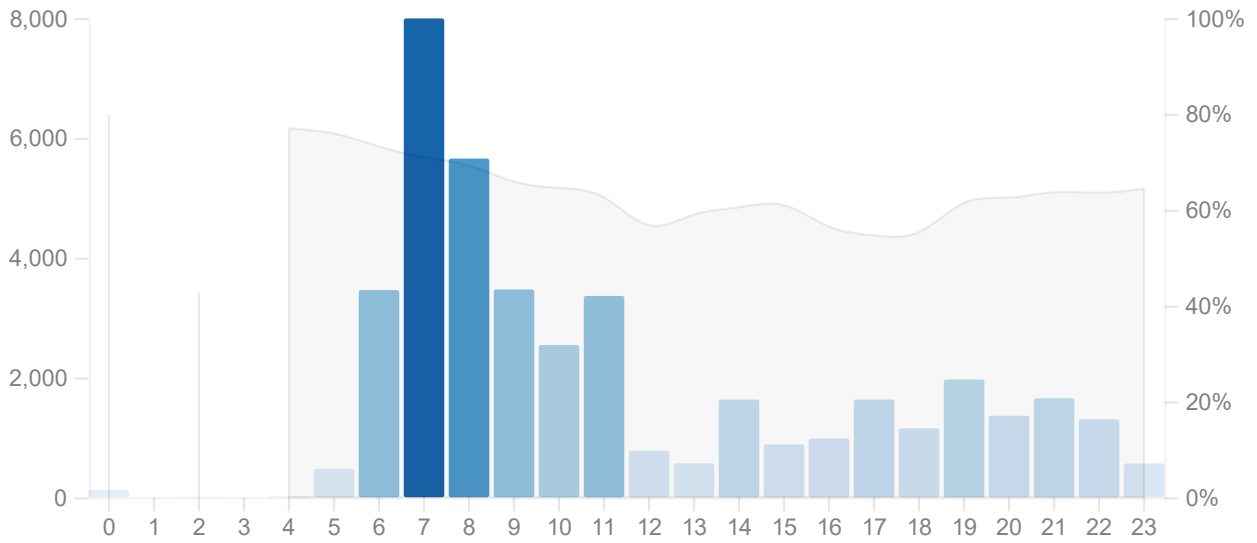
The lower the ease, the more frequently a card will appear.



Hourly Breakdown

Review success rate for each hour of the day.

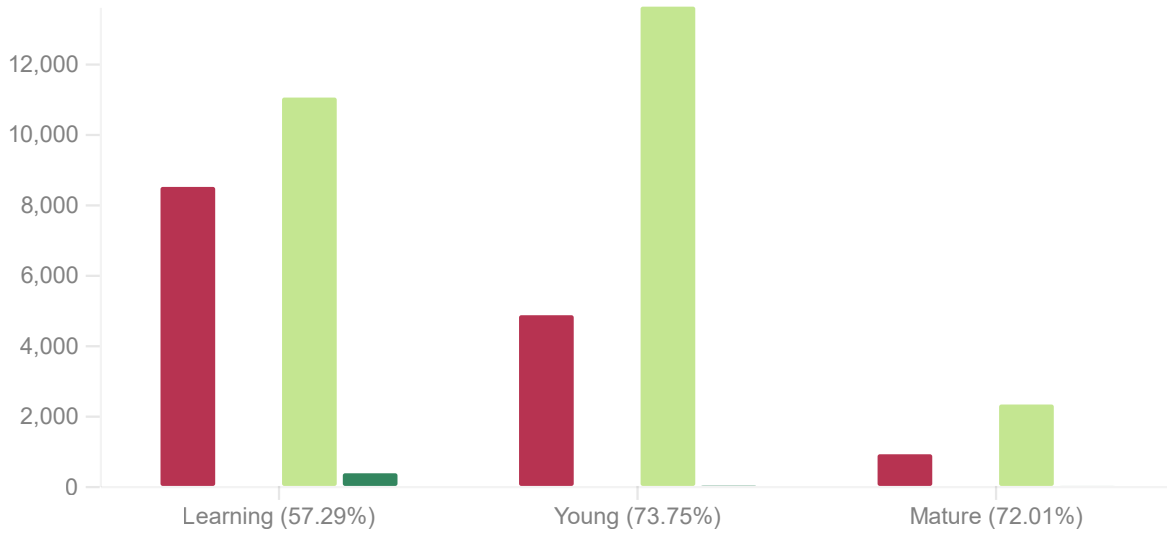
1 month 3 months 1 year



Answer Buttons

The number of times you have pressed each button.

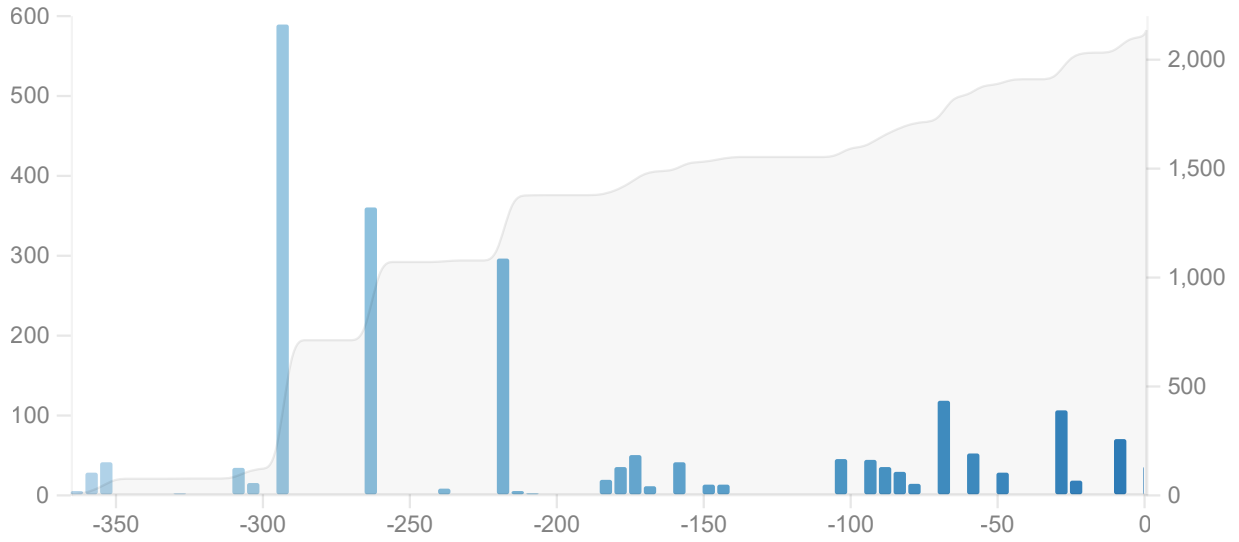
1 month 3 months 1 year



Added

The number of new cards you have added.

1 month 3 months 1 year all



Total: 2,130 cards

Average: 6 cards/day